



# HOOSIERS BY THE NUMBERS

Your premier source for labor market information for Indiana.

**DWD**

INDIANA DEPARTMENT OF  
**WORKFORCE**  
DEVELOPMENT

LABOR MARKET REVIEW



## September 2025 Labor Market Review

Reported by: Jillian A Gregory

Regional Workforce Analyst

[Email Jillian](mailto:jgregory@dwd.in.gov)

[jgregory@dwd.in.gov](mailto:jgregory@dwd.in.gov)

**DWD**

INDIANA DEPARTMENT OF  
**WORKFORCE**  
DEVELOPMENT

## LABOR MARKET REVIEW

# Economic Growth Regions 5 & 12

Statistical Data Report for September 2025, Released December 2025

## State Employment and Unemployment

Unemployment rates were higher in September in 8 states, lower in 2 states, and stable in 40 states and the District of Columbia, the U.S. Bureau of Labor Statistics reported. Eighteen states and the district had jobless rate increases from a year earlier, 9 states had decreases, and 23 states had little change. The national unemployment rate, 4.4 percent, changed little over the month but was 0.3 percentage point higher than in September 2024.

In September 2025, nonfarm payroll employment increased in 1 state, decreased in 1 state, and was essentially unchanged in 48 states and the District of Columbia. Over the year, nonfarm payroll employment increased in 15 states and was essentially unchanged in 35 states and the district



## Economic Growth Regions (EGR) 5 & 12

**EGR 5:** Boone, Hamilton, Hancock, Hendricks, Johnson, Madison, Marion, Morgan, and Shelby counties

**EGR 12:** Marion County

## Unemployment Rates by State (seasonally adjusted): September 2025

- U.S. - 4.4%**
- Illinois - 4.4%
- Indiana - 3.7%**
- Kentucky - 4.7%
- Michigan - 5.1%
- Ohio - 4.8%

Source: U.S. Department of Labor, Bureau of Labor Statistics

## Unemployment Rank by County (of 92 counties): September 2025

- #29 - Marion (3.6%)
- #34 - Madison (3.5%)
- #48 - Morgan (3.4%)
- #60 - Shelby (3.3%)
- #73 - Hancock (3.1%)
- #74 - Johnson (3.1%)
- #83 - Hendricks (3%)
- #86 - Boone (2.9%)
- #89 - Hamilton (2.9%)

Source: Indiana Department of Workforce Development, Research and Development, Local Area Unemployment Statistics

September 2025 Labor Force Estimates (not seasonally adjusted)						
Area	Labor Force	Employed	Unemployed	Sep-25	Aug-25	Sep-24
U.S.	171,217,000	163,894,000	7,324,000	4.3%	4.5%	3.9%
IN	3,500,370	3,377,247	123,123	3.5%	3.8%	4.0%
EGR 5	1,149,560	1,111,359	38,201	3.3%	3.6%	3.7%
Indy-Carmel-Greenwood MSA	1,165,668	1,126,926	38,742	3.3%	3.6%	3.7%
Boone Co.	42,557	41,342	1,215	2.9%	3.0%	3.0%
Hamilton Co.	212,196	206,022	6,174	2.9%	3.1%	3.2%
Hancock Co.	48,304	46,811	1,493	3.1%	3.2%	3.4%
Hendricks Co.	105,044	101,906	3,138	3.0%	3.2%	3.3%
Johnson Co.	90,472	87,668	2,804	3.1%	3.3%	3.4%
Madison Co.	65,448	63,153	2,295	3.5%	3.7%	3.9%
Marion Co.	523,590	504,565	19,025	3.6%	3.9%	4.1%
Morgan Co.	38,176	36,892	1,284	3.4%	3.5%	3.7%
Shelby Co.	23,773	23,000	773	3.3%	3.4%	3.4%
Anderson	25,601	24,548	1,053	4.1%	4.3%	4.5%
Carmel	58,069	56,375	1,694	2.9%	3.2%	3.1%
Fishers	60,100	58,386	1,714	2.9%	3.0%	3.1%
Greenfield	14,406	13,969	437	3.0%	3.3%	3.5%
Greenwood	36,317	35,191	1,126	3.1%	3.3%	3.5%
Indianapolis	479,039	461,550	17,489	3.7%	3.9%	4.1%
Lawrence	28,457	27,510	947	3.3%	3.7%	3.7%
Lebanon	9,878	9,584	294	3.0%	3.0%	3.3%
Noblesville	41,929	40,687	1,242	3.0%	3.2%	3.2%
Plainfield	19,232	18,594	638	3.3%	3.5%	3.6%
Shelbyville	10,690	10,326	364	3.4%	3.6%	3.4%
Westfield	33,305	32,361	944	2.8%	3.1%	3.2%
Zionsville	17,397	16,893	504	2.9%	3.2%	2.9%

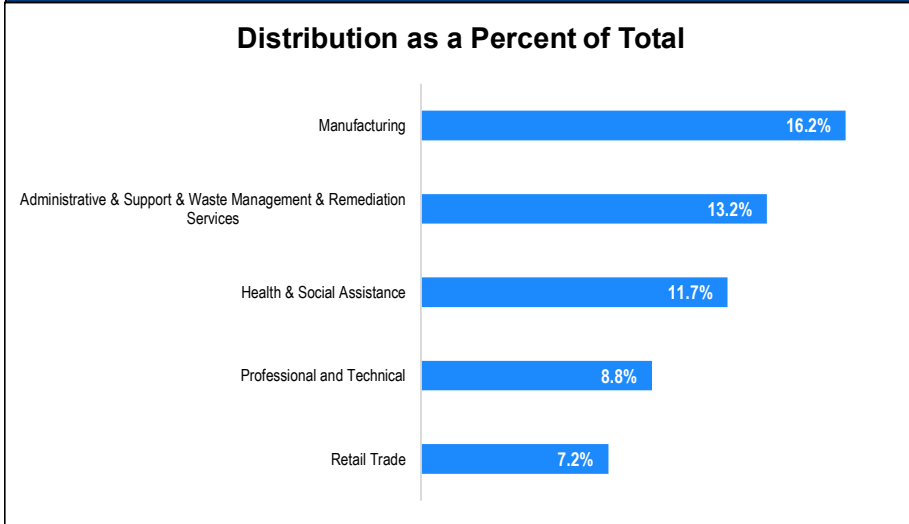
Source: Indiana Department of Workforce Development, Research & Analysis, Local Area Unemployment Statistics | Unemployment Statistics Released: 10/25

Notes: The data displayed are presented as estimates only. The most recent month's data are always preliminary and are revised when the next month's data are released.

Consumer Price Index (CPI-U Change), Unadjusted Percent Change to September 2025 from				
CPI Item	Sep-24	Aug-25	Sep-24	Aug-25
	U.S. City		Midwest Region*	
<b>All Items</b>	<b>3.0%</b>	<b>0.3%</b>	<b>3.1%</b>	<b>0.3%</b>
Food & Beverages	3.0%	0.3%	2.8%	0.2%
Housing	3.9%	0.1%	4.5%	0.2%
Apparel	-0.1%	2.6%	1.2%	4.1%
Transportation	1.7%	0.1%	0.5%	-0.5%
Medical Care	3.3%	0.2%	2.9%	0.5%
Recreation	3.0%	0.3%	4.7%	0.6%
Education & Communication	0.4%	0.2%	0.6%	0.7%
Other Goods & Services	4.1%	0.4%	3.3%	0.9%

\*Midwest region = Midwest Urban Average. Midwest Region includes Illinois, Indiana, Iowa, Kansas, Michigan, Minnesota, Missouri, Nebraska, North Dakota, Ohio, South Dakota and Wisconsin | Source: U.S. Bureau of Labor Statistics

**Percentage of Unemployment Claims for Top 5 Region 5 Industries  
September 2025**



Source: Indiana Department of Workforce Development, Research and Analysis

**WARN Notices for Regions 5 & 12 for September 2025**

Company	City	County	# of workers affected	Notice Date

**There are no WARN Notices for September 2025 in Regions 5 & 12**

Source: Indiana Department of Workforce Development, WARN Notices | For information on WARN Act requirements, you may go to the U.S. Department of Labor Employment Training Administration Fact Sheet:

<https://www.doleta.gov/programs/factsheet/warn.htm>

**Unemployment Claims:  
September 2025**

**Region 5**

**Initial Claims**

09/06/25 - 678

09/13/25 - 945

09/20/25 - 958

09/27/25 - 677

**Continued Claims**

09/06/25 - 5,626

09/13/25 - 5,643

09/20/25 - 5,812

09/27/25 - 5,509

**Total Claims**

09/06/25 - 6,538

09/13/25 - 6,504

09/20/25 - 6,703

09/27/25 - 6,450

**State of Indiana**

**Initial Claims**

09/06/25 - 2,348

09/13/25 - 2,652

09/20/25 - 2,456

09/27/25 - 2,285

**Continued Claims**

09/06/25 - 20,005

09/13/25 - 19,658

09/20/25 - 19,093

09/27/25 - 19,375

**Total Claims**

09/06/25 - 22,353

09/13/25 - 22,310

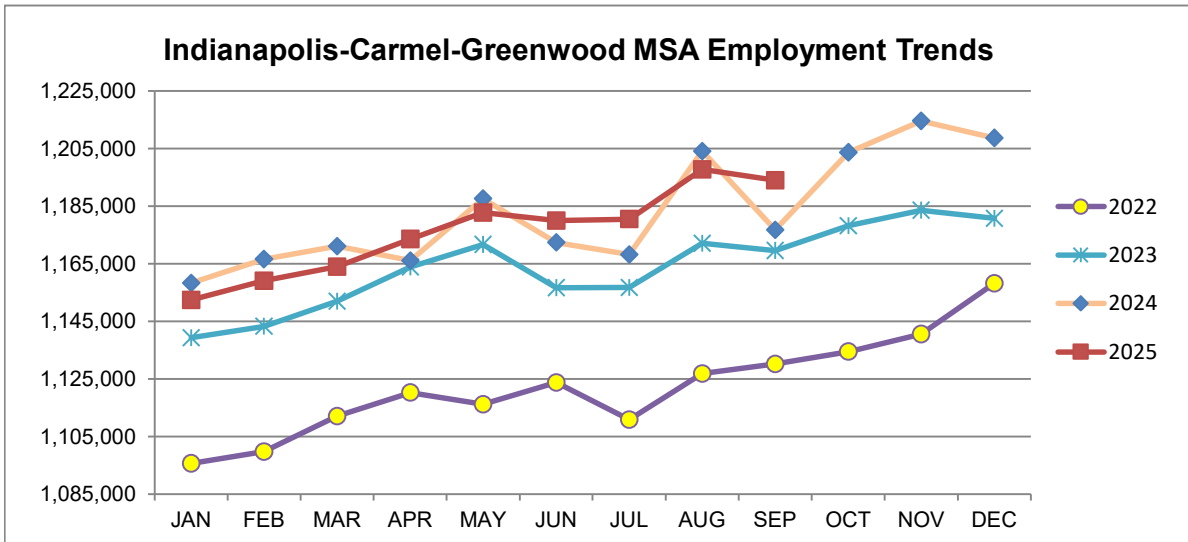
09/20/25 - 21,549

09/27/25 - 21,660

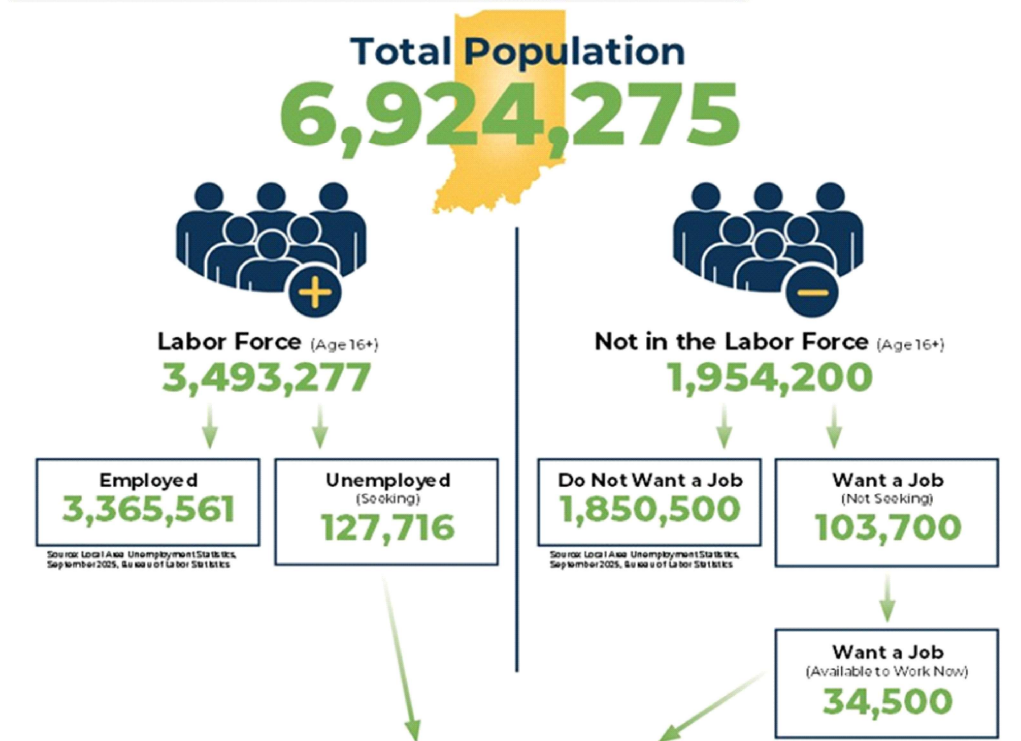
(D) indicates item is affected by non-disclosure issues relating to industry or ownership status \*Numbers subject to weekly revision Source: Indiana Department of Workforce Development

Indianapolis-Carmel-Greenwood MSA							
Wage and Salaried Employment	September 2025			# Change	% Change	# Change	% Change
Industry	Sep-25	Aug-25	Sep-24	Aug-25 to Sep-25		Sep-24 to Sep-25	
<b>Total Nonfarm</b>	<b>1,194,000</b>	<b>1,197,800</b>	<b>1,176,800</b>	<b>-3,800</b>	<b>-0.3%</b>	<b>17,200</b>	<b>1.5%</b>
<b>Total Private</b>	<b>1,046,400</b>	<b>1,049,900</b>	<b>1,030,800</b>	<b>-3,500</b>	<b>-0.3%</b>	<b>15,600</b>	<b>1.5%</b>
Goods Producing	168,400	169,100	166,200	-700	-0.4%	2,200	1.3%
Service-Providing	1,025,600	1,028,700	1,010,600	-3,100	-0.3%	15,000	1.5%
Private Service Providing	878,000	880,800	864,600	-2,800	-0.3%	13,400	1.6%
Mining and Logging	700	700	700	0	0.0%	0	0.0%
Mining, Logging and Construction	70,800	70,700	69,600	100	0.1%	1,200	1.7%
Construction	70,100	70,000	68,900	100	0.1%	1,200	1.7%
Specialty Trade Contractors	43,300	43,200	42,900	100	0.2%	400	0.9%
Manufacturing	97,600	98,400	96,600	-800	-0.8%	1,000	1.0%
Durable Goods	50,700	51,100	51,500	-400	-0.8%	-800	-1.6%
Transportation Equipment Manufacturing	14,000	14,100	14,300	-100	-0.7%	-300	-2.1%
Motor Vehicle Parts Manufacturing	9,400	9,400	9,500	0	0.0%	-100	-1.1%
Non-Durable Goods	46,900	47,300	45,100	-400	-0.9%	1,800	4.0%
Chemical Manufacturing	21,000	21,200	19,800	-200	-0.9%	1,200	6.1%
Trade, Transportation, and Utilities	248,900	249,400	245,700	-500	-0.2%	3,200	1.3%
Wholesale Trade	56,900	56,600	55,400	300	0.5%	1,500	2.7%
Merchant Wholesalers, Durable Goods	36,900	37,000	35,900	-100	-0.3%	1,000	2.8%
Retail Trade	99,100	100,100	98,600	-1,000	-1.0%	500	0.5%
General Merchandise Stores	23,900	23,900	24,100	0	0.0%	-200	-0.8%
Department Stores	4,200	4,200	4,200	0	0.0%	0	0.0%
Other General Merchandise Stores	19,700	19,700	19,900	0	0.0%	-200	-1.0%
Transportation, Warehousing, and Utilities	92,900	92,700	91,700	200	0.2%	1,200	1.3%
Transportation and Warehousing	89,900	89,600	88,300	300	0.3%	1,600	1.8%
Information	11,000	11,000	11,500	0	0.0%	-500	-4.4%
Telecommunications	2,300	2,300	2,500	0	0.0%	-200	-8.0%
Financial Activities	74,200	75,000	74,800	-800	-1.1%	-600	-0.8%
Finance and Insurance	56,700	57,300	58,000	-600	-1.1%	-1,300	-2.2%
Insurance Carriers and Related Activities	35,800	36,200	36,700	-400	-1.1%	-900	-2.5%
Insurance Carriers	18,800	19,000	19,300	-200	-1.1%	-500	-2.6%
Professional and Business Services	189,800	190,300	186,500	-500	-0.3%	3,300	1.8%
Professional, Scientific, and Technical Services	86,800	87,400	81,900	-600	-0.7%	4,900	6.0%
Management of Companies and Enterprises	15,400	15,400	15,500	0	0.0%	-100	-0.7%
Administrative and Support and Waste Management and Remediation Services	87,600	87,500	89,100	100	0.1%	-1,500	-1.7%
Administrative and Support Services	83,200	83,200	84,900	0	0.0%	-1,700	-2.0%
Employment Services	42,100	41,700	43,200	400	1.0%	-1,100	-2.6%
Education and Health Services	193,500	192,800	185,800	700	0.4%	7,700	4.1%
Educational Services	22,400	20,400	21,100	2,000	9.8%	1,300	6.2%
Health Care and Social Assistance	171,100	172,400	164,700	-1,300	-0.8%	6,400	3.9%
Ambulatory Health Care Services	77,000	77,500	73,300	-500	-0.7%	3,700	5.1%
Hospitals	45,200	45,500	44,000	-300	-0.7%	1,200	2.7%
Leisure and Hospitality	112,300	113,100	111,300	-800	-0.7%	1,000	0.9%
Accommodation and Food Services	90,000	92,500	91,800	-2,500	-2.7%	-1,800	-2.0%
Food Services and Drinking Places	82,100	84,200	83,800	-2,100	-2.5%	-1,700	-2.0%
Restaurants and Other Eating Places	73,500	75,900	74,600	-2,400	-3.2%	-1,100	-1.5%
Full-service restaurants	36,300	37,500	36,700	-1,200	-3.2%	-400	-1.1%
Limited-Service Restaurants and Other Eating Places	37,200	38,400	37,900	-1,200	-3.1%	-700	-1.9%
Other Services	48,300	49,200	49,000	-900	-1.8%	-700	-1.4%
<b>Total Government</b>	<b>147,600</b>	<b>147,900</b>	<b>146,000</b>	<b>-300</b>	<b>-0.2%</b>	<b>1,600</b>	<b>1.1%</b>
Federal Government	19,700	19,900	19,700	-200	-1.0%	0	0.0%
State Government	36,500	35,800	37,000	700	2.0%	-500	-1.4%
Local Government	91,400	92,200	89,300	-800	-0.9%	2,100	2.4%
Local Government Educational Services	45,500	44,600	44,800	900	2.0%	700	1.6%

Source: Indiana Dept of Workforce Development, Research and Analysis, Current Employment Statistics



**BREAKDOWN**  
**September Indiana Labor Force**  
 Released December 11, 2025



### Potential Workers

(Unemployed and Seeking a Job + Not in the Labor Force but Want a Job/Available to Work Now)

# 162,216

More about the U.S. Bureau of Labor Statistics data sources used within:  
 Local Area Unemployment Statistics (LAUS) Capture Indiana's labor force which includes those currently employed and those who are unemployed and actively seeking work.  
 Current Population Survey (CPS) Capture individuals not participating in Indiana's Labor Force. This set includes non-participants that do not want a job (i.e. retirees and students) and those that want a job but are not actively seeking work.  
 U.S. Census Bureau, Indiana Population 2024.

Resource: Notes on Using Current Population Survey (CPS) Subnational Data and Differences Between CPS and LAUS Estimates



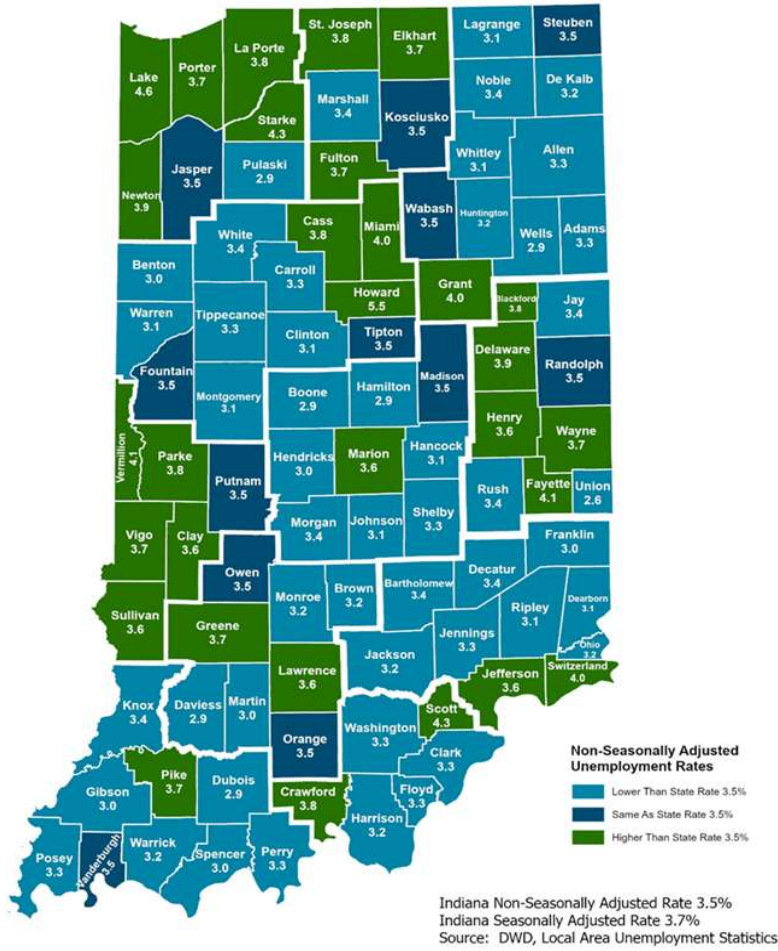
<b>Frequently Listed Jobs</b>	
<b>Top 20 job listings by number of openings in Region 5 in the past month</b>	
<b>Rank</b>	<b>Occupations</b>
1	Registered Nurses
2	Heavy and Tractor-Trailer Truck Drivers
3	Retail Salespersons
4	Maintenance and Repair Workers, General
5	Customer Service Representatives
6	Laborers and Freight, Stock, and Material Movers, Hand
7	First-Line Supervisors of Retail Sales Workers
8	Sales Representatives, Wholesale and Manufacturing, Except Technical and Scientific Products
9	Medical and Health Services Managers
10	Project Management Specialists
11	General and Operations Managers
12	Software Developers
13	Computer Occupations, All Other
14	Home Health and Personal Care Aides
15	Food Service Managers
16	Sales Managers
17	Licensed Practical and Licensed Vocational Nurses
18	First-Line Supervisors of Office and Administrative Support Workers
19	Financial Managers
20	Health Technologists and Technicians, All Other

Source: Lightcast

<b>Applicant Pool</b>	
<b>Top 20 occupations desired by applicants on their resumes in the past 12 months</b>	
<b>Occupations</b>	<b># of applicants</b>
Material Moving Workers, All Other	258
Maintenance and Repair Workers, General	262
Accountants and Auditors	262
Sales and Related Workers, All Other	244
Landscaping and Groundskeeping Workers	242
Carpenters	234
Healthcare Support Workers, All Other	233
Maids and Housekeeping Cleaners	230
Light Truck or Delivery Services Drivers	229
Food Preparation Workers	220
Electrical and Electronic Equipment Assemblers	217
First-Line Supervisors of Retail Sales Workers	215
Sales Representatives, Wholesale and Manufacturing, Except Technical and Scientific Products	212
Driver/Sales Workers	209
Marketing Managers	205
Inspectors, Testers, Sorters, Samplers, and Weighers	193
Transportation, Storage, and Distribution Managers	192
Bill and Account Collectors	192
Welders, Cutters, Solderers, and Brazers	191
Billing and Posting Clerks	188

Source: Indiana Workforce Development, Indiana Career Connect

## County Unemployment Rates September 2025



### Questions?

Please contact the DWD Research and Analysis Regional Labor Analyst listed below:

**Jillian A Gregory**

Regional Labor Analyst

Research and Analysis

[Indiana Department of Workforce Development](http://Indiana Department of Workforce Development)  
[jgregory@dwd.in.gov](mailto:jgregory@dwd.in.gov)