



HOOSIERS BY THE NUMBERS

Your premier source for labor market information for Indiana.



LABOR MARKET REVIEW



April 2026 Labor Market Review

Reported by: **Cassie Janes**

Regional Workforce Analyst

[Email Cassie](#)

cjanes@dwd.in.gov



INDIANA DEPARTMENT OF
WORKFORCE
DEVELOPMENT

Economic Growth Region 6

Statistical Data Report for April 2026, Released June 2026

State Employment and Unemployment

Unemployment rates were lower in April in 3 states, higher in 2 states, and stable in 45 states and the District of Columbia, the U.S. Bureau of Labor Statistics reported. Nineteen states had jobless rate increases from a year 25 states and the District had little change. The national unemployment rate, 4.3 percent, was unchanged over the month and was little changed from April 2025.

In April 2026, nonfarm payroll employment increased in 6 states and was essentially unchanged in 44 states and the District of Columbia. Over the year, nonfarm payroll employment decreased in 1 state and the District, increased in 1 state, and was essentially unchanged in 48 states.

South Dakota had the lowest jobless rate in April, 2.2 percent, followed by North Dakota, 2.4 percent. The District of Columbia had the highest unemployment rate, 6.2 percent. The next highest rates were in California, Delaware, and Nevada, 5.3 percent each. In total, 17 states had unemployment rates lower than the U.S. figure of 4.3 percent, 6 states and the District had higher rates, and 27 states had rates that were not appreciably different from that of the nation.



Economic Growth Region (EGR) 6

Blackford, Delaware, Fayette, Henry, Jay, Randolph, Rush, Union, and Wayne Counties

Unemployment Rates by State (seasonally adjusted): April 2026

U.S. - 4.3%

Illinois - 5.1%

Indiana - 3.2%

Kentucky - 4.3%

Michigan - 5%

Ohio - 3.9%

Source: U.S. Department of Labor, Bureau of Labor Statistics

Unemployment Rank by County (of 92 counties): April 2026

#8 - Fayette (3.2%)

#10 - Blackford (3.1%)

#12 - Delaware (3.1%)

#31 - Wayne (2.7%)

#33 - Henry (2.6%)

#52 - Randolph (2.5%)

#53 - Rush (2.5%)

#70 - Jay (2.3%)

#92 - Union (1.8%)

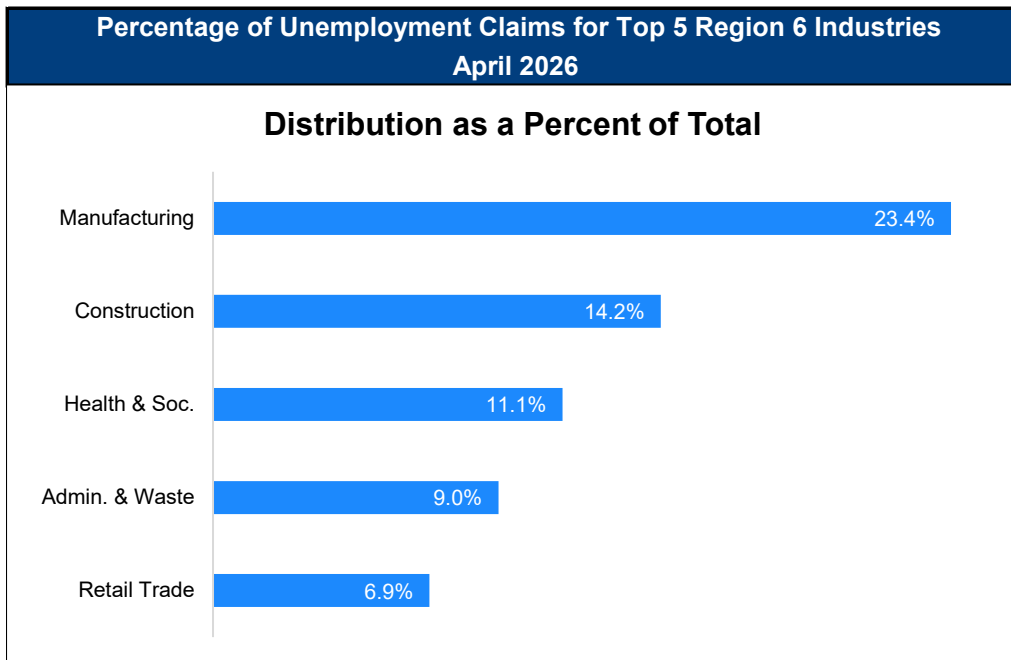
Source: Indiana Department of Workforce Development, Research and Development, Local Area Unemployment Statistics

April 2026 Labor Force Estimates (not seasonally adjusted)						
Area	Labor Force	Employed	Unemployed	Apr-26	Mar-26	Apr-25
U.S.	169,548,000	162,781,000	6,768,000	4.0%	4.3%	3.9%
IN	3,467,580	3,372,212	95,368	2.8%	3.6%	3.3%
EGR 6	154,602	150,265	4,337	2.8%	3.7%	3.4%
Muncie MSA	52,792	51,131	1,661	3.1%	4.1%	3.4%
Blackford Co.	5,102	4,945	157	3.1%	4.0%	3.5%
Delaware Co.	52,792	51,131	1,661	3.1%	4.1%	3.4%
Fayette Co.	10,026	9,702	324	3.2%	4.0%	3.9%
Henry Co.	22,329	21,753	576	2.6%	3.5%	3.5%
Jay Co.	9,392	9,172	220	2.3%	3.2%	3.0%
Randolph Co.	12,029	11,727	302	2.5%	3.2%	3.6%
Rush Co.	8,202	7,997	205	2.5%	3.5%	2.9%
Union Co.	4,200	4,125	75	1.8%	2.4%	2.2%
Wayne Co.	30,530	29,713	817	2.7%	3.6%	3.5%
Connersville	5,478	5,275	203	3.7%	4.2%	4.3%
Muncie	29,921	28,906	1,015	3.4%	4.5%	3.7%
New Castle	8,219	8,008	211	2.6%	3.3%	3.4%
Richmond	15,406	14,941	465	3.0%	3.8%	3.9%

Source: Indiana Department of Workforce Development, Research & Analysis, Local Area Unemployment Statistics | Unemployment Statistics Released: 06/26 | Notes: The data displayed are presented as estimates only. The most recent month's data are always preliminary and are revised when the next month's data are released.

Consumer Price Index (CPI-U Change), Unadjusted Percent Change to April 2026 from				
CPI Item	Apr-25	Mar-26	Apr-25	Mar-26
	U.S. City		Midwest Region*	
All Items	3.8%	0.9%	4.1%	0.8%
Food & Beverages	3.1%	0.5%	3.1%	0.5%
Housing	3.6%	0.6%	4.7%	0.8%
Apparel	4.2%	-0.4%	5.4%	-0.8%
Transportation	7.1%	2.9%	5.8%	2.7%
Medical Care	2.5%	-0.1%	3.4%	-0.3%
Recreation	2.3%	0.0%	4.2%	0.0%
Education & Communication	0.2%	-0.1%	0.1%	0.2%
Other Goods & Services	4.4%	0.9%	0.5%	-1.0%

*Midwest region = Midwest Urban Average. Midwest Region includes Illinois, Indiana, Iowa, Kansas, Michigan, Minnesota, Missouri, Nebraska, North Dakota, Ohio, South Dakota and Wisconsin | Source: U.S. Bureau of Labor Statistics



Source: Indiana Department of Workforce Development, Research and Analysis

WARN Notices

WARN Notices for Region 6 for April 2026				
Company	City	County	# of workers affected	Notice Date

There are no WARN Notices for April 2026 for EGR 6.

Source: Indiana Department of Workforce Development, WARN Notices | For information on WARN Act requirements, you may go to the U.S. Department of Labor Employment Training Administration Fact Sheet:

<https://www.doleta.gov/programs/factsht/warn.htm>

Unemployment Claims: April 2026

Region 6

Initial Claims

04/04/26 - 68(D)

04/11/26 - 93(D)

04/18/26 - 94(D)

04/25/26 - 58(D)

Continued Claims

04/04/26 - 744

04/11/26 - 719

04/18/26 - 702

04/25/26 - 660

Total Claims

04/04/26 - 812

04/11/26 - 812

04/18/26 - 796

04/25/26 - 718

State of Indiana

Initial Claims

04/04/26 - 2,727

04/11/26 - 3,629

04/18/26 - 2,479

04/25/26 - 2,138

Continued Claims

04/04/26 - 20,966

04/11/26 - 21,000

04/18/26 - 20,087

04/25/26 - 19,380

Total Claims

04/04/26 - 23,693

04/11/26 - 24,629

04/18/26 - 22,566

04/25/26 - 21,518

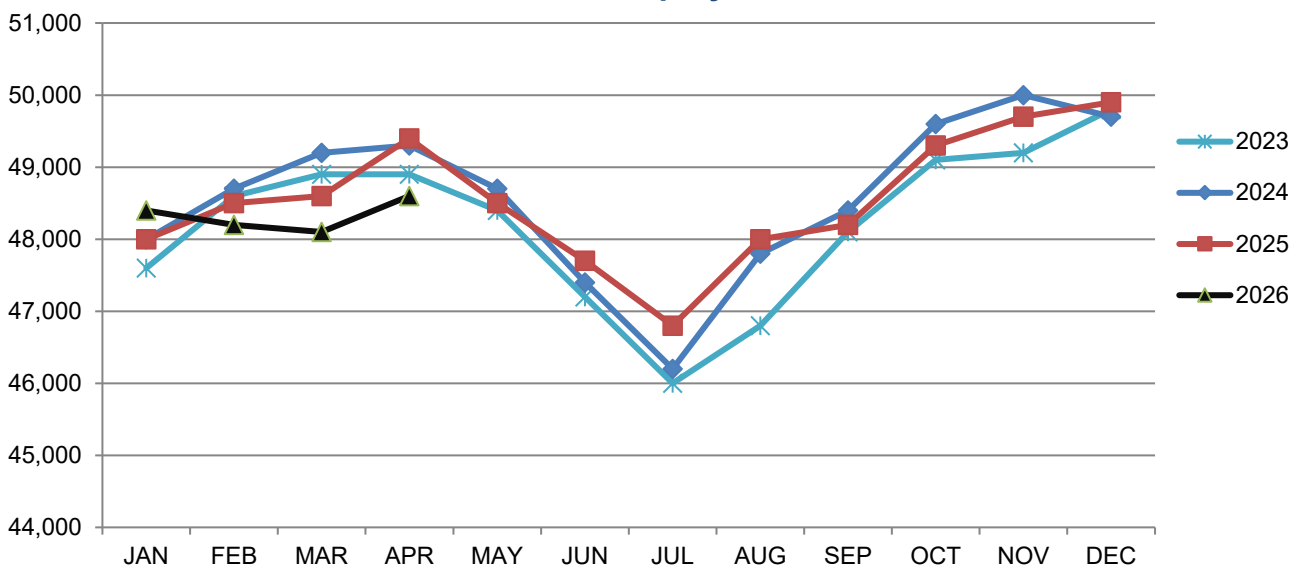
(D) indicates item is affected by non-disclosure issues relating to industry or ownership status |

Source: Indiana Department of Workforce Development, Research and Development

Muncie MSA							
Wage and Salaried Employment	April 2026			# Change	% Change	# Change	% Change
Industry	Apr-26	Mar-26	Apr-25	Mar-26 to Apr-26	Apr-25 to Apr-26		
Total Nonfarm	48,600	48,100	49,400	500	1.0%	-800	-1.6%
Total Private	38,200	38,000	38,400	200	0.5%	-200	-0.5%
Goods Producing	5,800	5,800	5,600	0	0.0%	200	3.6%
Service-Providing	42,800	42,300	43,800	500	1.2%	-1,000	-2.3%
Private Service Providing	32,400	32,200	32,800	200	0.6%	-400	-1.2%
Mining, Logging and Construction	1,600	1,600	1,600	0	0.0%	0	0.0%
Manufacturing	4,200	4,200	4,000	0	0.0%	200	5.0%
Trade, Transportation, and Utilities	8,000	7,900	8,400	100	1.3%	-400	-4.8%
Wholesale Trade	1,300	1,300	1,400	0	0.0%	-100	-7.1%
Retail Trade	5,700	5,600	5,900	100	1.8%	-200	-3.4%
Transportation, Warehousing, and Utilities	1,000	1,000	1,100	0	0.0%	-100	-9.1%
Information	300	300	400	0	0.0%	-100	-25.0%
Financial Activities	2,300	2,300	2,400	0	0.0%	-100	-4.2%
Education and Health Services	10,300	10,200	10,100	100	1.0%	200	2.0%
Leisure and Hospitality	5,100	5,000	5,300	100	2.0%	-200	-3.8%
Other Services	2,200	2,200	2,100	0	0.0%	100	4.8%
Government	10,400	10,100	11,000	300	3.0%	-600	-5.5%
State Government	6,500	6,400	6,900	100	1.6%	-400	-5.8%
State Government Educational Services	6,300	6,200	6,700	100	1.6%	-400	-6.0%
State Government Excluding Education	200	200	200	0	0.0%	0	0.0%
Local Government	3,800	3,700	3,700	100	2.7%	100	2.7%
Local Government Educational Services	2,200	2,100	2,100	100	4.8%	100	4.8%
Local Government excluding Educational Services	1,600	1,600	1,600	0	0.0%	0	0.0%

Source: Indiana Dept of Workforce Development, Research and Analysis, Current Employment Statistics

Muncie MSA Employment Trends



Source: Indiana Department of Workforce Development, Research & Analysis, Current Employment Statistics | Note: Historical data for the most recent 4 years (both seasonally adjusted and not seasonally adjusted) are revised near the beginning of each calendar year, prior to the release of January estimates for statewide data.

Frequently Listed Jobs	
Top 20 job listings by number of postings in Region 6 in the past month	
Rank	Occupations
1	Physicians
2	Driver/Sales Workers and Truck Drivers
3	Registered Nurses
4	Retail Salespersons
5	First-Line Supervisors of Sales Workers
6	Therapists
7	Licensed Practical and Licensed Vocational Nurses
8	Home Health and Personal Care Aides
9	Counselors
10	Laborers and Material Movers
11	Building Cleaning Workers
12	Food Service Managers
13	Nursing Assistants, Orderlies, and Psychiatric Aides
14	Miscellaneous Healthcare Support Occupations
15	Medical and Health Services Managers
16	Food Preparation Workers
17	Health Practitioner Support Technologists and Technicians
18	Maintenance and Repair Workers, General
19	Customer Service Representatives
20	Designers

Source: Lightcast

Applicant Pool	
Top 20 occupations desired by applicants on their resumes in the past 12 months	
Occupations	# of applicants
Production Workers, All Other	255
Assemblers and Fabricators, All Other	165
Customer Service Representatives	121
Helpers--Production Workers	103
Cashiers	84
Office Clerks, General	75
Laborers and Freight, Stock, and Material Movers, Hand	72
Team Assemblers	49
Office and Administrative Support Workers, All Other	48
Managers, All Other	43
Extraction Workers, All Other	39
Heavy and Tractor-Trailer Truck Drivers	39
Industrial Truck and Tractor Operators	39
Retail Salespersons	39
Construction Laborers	38
Inspectors, Testers, Sorters, Samplers, and Weighers	37
First-Line Supervisors of Production and Operating Workers	35
Waiters and Waitresses	35
Executive Secretaries and Executive Administrative Assistants	32
General and Operations Managers	32

Source: Indiana Workforce Development, Indiana Career Connect

BREAKDOWN

April Indiana Labor Force

Released May 22, 2026



Total Population 6,973,333



Labor Force (Age 16+)
3,487,162



Not in the Labor Force (Age 16+)
1,983,200

Employed
3,373,886

Source: Local Area Unemployment Statistics, April 2026, Bureau of Labor Statistics

Unemployed (Seeking)
113,276

Do Not Want a Job
1,858,700

Source: Local Area Unemployment Statistics, April 2026, Bureau of Labor Statistics

Want a Job (Not Seeking)
124,400

Want a Job (Available to Work Now)
44,200

Potential Workers

(Unemployed and Seeking a Job + Not in the Labor Force but Want a Job/Available to Work Now)

157,476

More about the US Bureau of Labor Statistics data sources used within:
Local Area Unemployment Statistics (LAUS): Captures Indiana's labor force, which includes those currently employed and those who are unemployed and actively seeking work.
Current Population Survey (CPS): Captures individuals not participating in Indiana's Labor Force. This set includes non-participants that do not want a job (i.e. retirees and students) and those that want a job but are not actively seeking work.
U.S. Census Bureau, Indiana Population 2025

Resource: Notes on Using Current Population Survey (CPS) Subnational Data and Differences Between CPS and LAUS Estimates

