



HOOSIERS BY THE NUMBERS

Your premier source for labor market information for Indiana.



LABOR MARKET REVIEW



October 2024 Labor Market Review

Reported by: Jillian Gregory

Regional Workforce Analyst

[Email Jillian](#)

jgregory@dwd.in.gov



INDIANA DEPARTMENT OF
WORKFORCE
DEVELOPMENT

Economic Growth Region 9

Statistical Data Report for October 2024, Released December 2024

State Employment and Unemployment

Unemployment rates were lower in October in 3 states, higher in 1 state, and stable in 46 states and the District of Columbia, the U.S. Bureau of Labor Statistics reported. Twenty-four states and the district had jobless rate increases from a year earlier, 6 states had decreases, and 20 states had little change. The national unemployment rate was unchanged over the month at 4.1 percent but was 0.3 percentage point higher than in October 2023.

Nonfarm payroll employment decreased in 2 states and was essentially unchanged in 48 states and the District of Columbia in October 2024. Over the year, nonfarm payroll employment increased in 27 states and was essentially unchanged in 23 states and the district.

South Dakota had the lowest jobless rate in October, 1.9 percent. The District of Columbia and Nevada had the highest unemployment rates, 5.7 percent each. In total, 24 states had unemployment rates lower than the U.S. figure of 4.1 percent, 3 states and the district had higher rates, and 23 states had rates that were not appreciably different from that of the nation.



Economic Growth Region (EGR) 9

Bartholomew, Dearborn, Decatur, Franklin, Jackson, Jefferson, Jennings, Ohio, Ripley, and Switzerland Counties

October 2024 Labor Force Estimates (not seasonally adjusted)						
Area	Labor Force	Employed	Unemployed	Oct-24	Sep-24	Oct-23
U.S.	168,569,000	161,938,000	6,631,000	3.9%	3.9%	3.6%
IN	3,460,202	3,322,315	137,887	4.0%	4.3%	3.1%
EGR 9	169,556	163,402	6,154	3.6%	3.8%	2.9%
Columbus MSA	44,508	42,968	1,540	3.5%	3.7%	2.7%
Bartholomew Co.	44,508	42,968	1,540	3.5%	3.7%	2.7%
Dearborn Co.	26,282	25,302	980	3.7%	4.0%	3.0%
Decatur Co.	14,560	14,042	518	3.6%	3.4%	2.6%
Franklin Co.	10,650	10,252	398	3.7%	4.0%	2.9%
Jackson Co.	23,168	22,403	765	3.3%	3.5%	2.7%
Jefferson Co.	15,328	14,747	581	3.8%	4.0%	2.9%
Jennings Co.	13,973	13,434	539	3.9%	4.0%	3.0%
Ohio Co.	3,248	3,136	112	3.4%	3.6%	2.8%
Ripley Co.	13,149	12,617	532	4.0%	4.2%	3.3%
Switzerland Co.	4,690	4,501	189	4.0%	4.4%	3.3%
Batesville	3,375	3,262	113	3.3%	4.1%	2.9%
Brookville	1,019	977	42	4.1%	4.2%	3.7%
Columbus	25,478	24,568	910	3.6%	3.9%	2.8%
Greensburg	6,435	6,196	239	3.7%	3.5%	2.8%
Lawrenceburg	2,050	1,910	140	6.8%	7.4%	4.8%
Madison	5,544	5,328	216	3.9%	4.1%	3.2%
North Vernon	2,993	2,847	146	4.9%	4.7%	3.5%
Seymour	10,512	10,165	347	3.3%	3.5%	2.7%

Unemployment Rates by State (seasonally adjusted): October 2024

U.S. - 4.1%

Illinois - 5.3%

Indiana - 4.4%

Kentucky - 5%

Michigan - 4.7%

Ohio - 4.3%

Source: U.S. Department of Labor, Bureau of Labor Statistics

Unemployment Rank by County (of 92 counties): October 2024

#36 - Ripley (4%)

#37 - Switzerland (4%)

#41 - Jennings (3.9%)

#47 - Jefferson (3.8%)

#52 - Dearborn (3.7%)

#53 - Franklin (3.7%)

#58 - Decatur (3.6%)

#63 - Bartholomew (3.5%)

#75 - Ohio (3.4%)

#82 - Jackson (3.3%)

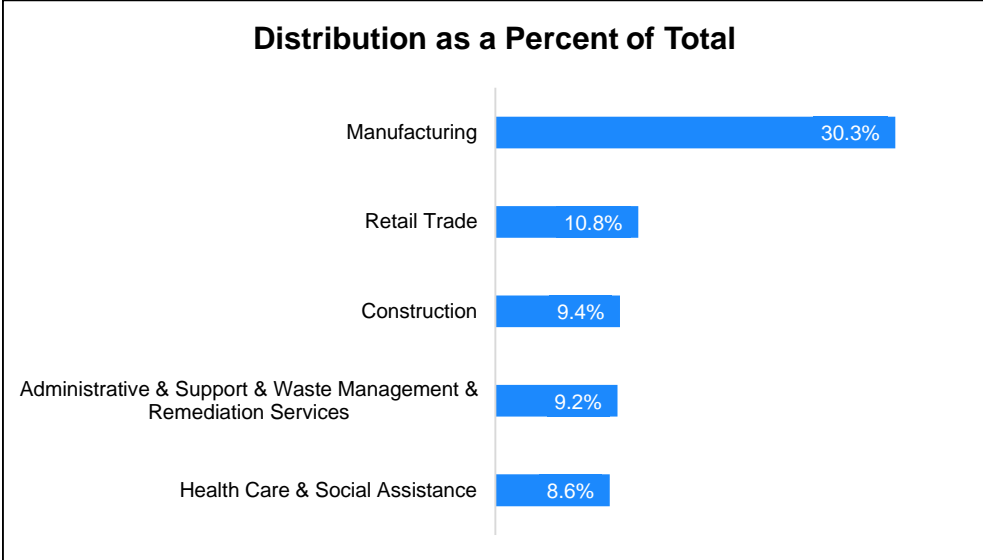
Source: Indiana Department of Workforce Development, Research and Development, Local Area Unemployment Statistics

Source: Indiana Department of Workforce Development, Research & Analysis, Local Area Unemployment Statistics | Unemployment Statistics Released: 11/24 | Notes: The data displayed are presented as estimates only. The most recent month's data are always preliminary and are revised when the next month's data are released.

Consumer Price Index (CPI-U Change), Unadjusted Percent Change to October 2024 from				
CPI Item	Oct-23	Sep-24	Oct-23	Sep-24
	U.S. City		Midwest Region*	
All Items	2.6%	0.1%	2.6%	0.1%
Food & Beverages	2.1%	0.2%	2.0%	0.1%
Housing	4.2%	0.2%	4.6%	-0.1%
Apparel	0.3%	-1.7%	2.6%	-0.3%
Transportation	-0.1%	0.0%	-0.7%	-0.3%
Medical Care	3.3%	0.3%	1.9%	0.2%
Recreation	1.0%	0.3%	1.0%	0.4%
Education & Communication	0.8%	-0.3%	-0.1%	-0.6%
Other Goods & Services	3.3%	0.4%	5.3%	-0.1%

*Midwest region = Midwest Urban Average. Midwest Region includes Illinois, Indiana, Iowa, Kansas, Michigan, Minnesota, Missouri, Nebraska, North Dakota, Ohio, South Dakota and Wisconsin | Source: U.S. Bureau of Labor Statistics

Percentage of Unemployment Claims for Top 5 Region 9 Industries October 2024



Source: Indiana Department of Workforce Development, Research and Analysis

WARN Notices

WARN Notices for Region 9 for October 2024				
Company	City	County	# of workers affected	Notice Date

There are no WARN Notices for October 2024 for EGR 9.

Source: Indiana Department of Workforce Development, WARN Notices | For information on WARN Act requirements, you may go to the U.S. Department of Labor Employment Training Administration Fact Sheet:

<https://www.doleta.gov/programs/factsht/warn.htm>

Unemployment Claims: October 2024

Region 9

Initial Claims

10/05/24 - 92(D)

10/12/24 - 81(D)

10/19/24 - 47(D)

10/26/24 - 39(D)

Continued Claims

10/05/24 - 498

10/12/24 - 501

10/19/24 - 489

10/26/24 - 469

Total Claims

10/05/24 - 590

10/12/24 - 582

10/19/24 - 536

10/26/24 - 508

State of Indiana

Initial Claims

10/05/24 - 5,910

10/12/24 - 3,737

10/19/24 - 3,082

10/26/24 - 3,152

Continued Claims

10/05/24 - 20,932

10/12/24 - 20,745

10/19/24 - 21,386

10/26/24 - 20,802

Total Claims

10/05/24 - 26,842

10/12/24 - 24,482

10/19/24 - 24,468

10/26/24 - 23,954

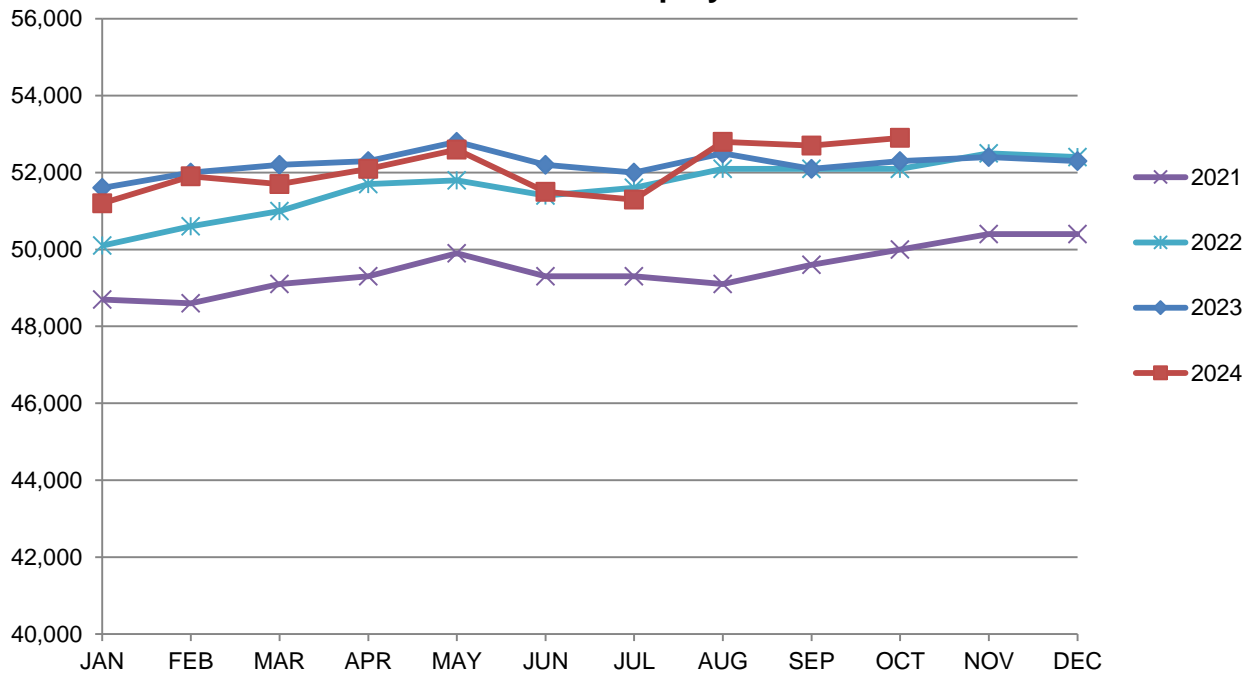
(D) indicates item is affected by non-disclosure issues relating to industry or ownership status |

*Numbers subject to weekly revision | Source: Indiana Department of Workforce Development, Research and Analysis

Columbus MSA							
Wage and Salaried Employment	October 2024			# Change	% Change	# Change	% Change
Industry	Oct-24	Sep-24	Oct-23	Sep-24 to Oct-24		Oct-23 to Oct-24	
Total Nonfarm	52,900	52,700	52,300	200	0.4%	600	1.2%
Total Private	46,500	46,300	46,100	200	0.4%	400	0.9%
Goods Producing	21,200	21,200	21,200	0	0.0%	0	0.0%
Service-Providing	31,700	31,500	31,100	200	0.6%	600	1.9%
Private Service Providing	25,300	25,100	24,900	200	0.8%	400	1.6%
Mining, Logging and Construction	1,900	1,800	1,800	100	5.6%	100	5.6%
Manufacturing	19,300	19,400	19,400	-100	-0.5%	-100	-0.5%
Durable Goods	17,200	17,300	17,300	-100	-0.6%	-100	-0.6%
Trade, Transportation, and Utilities	7,700	7,600	7,500	100	1.3%	200	2.7%
Retail Trade	4,700	4,700	4,800	0	0.0%	-100	-2.1%
Information	300	300	300	0	0.0%	0	0.0%
Financial Activities	1,600	1,600	1,600	0	0.0%	0	0.0%
Professional and Business Services	5,100	5,000	5,100	100	2.0%	0	0.0%
Education and Health Services	4,900	4,800	4,800	100	2.1%	100	2.1%
Leisure and Hospitality	4,300	4,300	4,200	0	0.0%	100	2.4%
Other Services	1,400	1,500	1,400	-100	-6.7%	0	0.0%
Total Government	6,400	6,400	6,200	0	0.0%	200	3.2%
Federal Government	200	200	200	0	0.0%	0	0.0%
State Government	1,000	1,000	900	0	0.0%	100	11.1%
Local Government	5,200	5,200	5,100	0	0.0%	100	2.0%
Local Government Educational Services	2,100	2,100	2,000	0	0.0%	100	5.0%

Source: Indiana Dept of Workforce Development, Research and Analysis, Current Employment Statistics

Columbus MSA Employment Trends



Source: Indiana Department of Workforce Development, Research & Analysis, Current Employment Statistics | Note: Historical data for the most recent 4 years (both seasonally adjusted and not seasonally adjusted) are revised near the beginning of each calendar year, prior to the release of January estimates for statewide data.

Frequently Listed Jobs	
Top 20 job listings in Region 9 in the past month	
Rank	Occupations
1	Personal Care Aides
2	Electrical Engineers
3	Industrial Engineers
4	Licensed Practical and Licensed Vocational Nurses
5	Mechanical Engineers
6	Nursing Assistants
7	Registered Nurses
8	Agricultural Equipment Operators
9	Computer Systems Analysts
10	Market Research Analysts and Marketing Specialists
11	Marketing Managers
12	News Analysts, Reporters, and Journalists
13	Production Workers, All Other
14	Career/Technical Education Teachers, Postsecondary
15	Cooks, Fast Food
16	Customer Service Representatives
17	Engine and Other Machine Assemblers
18	Facilities Managers
19	First-Line Supervisors of Food Preparation and Serving Workers
20	First-Line Supervisors of Mechanics, Installers, and Repairers

Applicant Pool	
Top 20 occupations desired by applicants on their resumes in the past 12 months	
Occupations	# of Applicants
Production Workers, All Other	365
Assemblers and Fabricators, All Other	269
Helpers--Production Workers	161
Customer Service Representatives	140
Heavy and Tractor-Trailer Truck Drivers	128
Laborers and Freight, Stock, and Material Movers, Hand	124
Cashiers	121
Industrial Truck and Tractor Operators	96
Construction Laborers	94
Office Clerks, General	94
Extraction Workers, All Other	86
Managers, All Other	77
First-Line Supervisors of Production and Operating Workers	75
Office and Administrative Support Workers, All Other	75
Retail Salespersons	66
Inspectors, Testers, Sorters, Samplers, and Weighers	65
Construction and Related Workers, All Other	64
Secretaries and Administrative Assistants, Except Legal, Medical, and Executive	61
Electrical and Electronic Equipment Assemblers	58
Landscaping and Groundskeeping Workers	54

TED: The Economics Daily

U.S. Bureau of Labor Statistics

2.6 million workplace injuries and illnesses in private industry in 2023, down 8.4 percent from 2022

November 19, 2024

Private industry employers reported 2.6 million nonfatal workplace injuries and illnesses in 2023, down 8.4 percent from 2022. This decrease was driven by a 56.6-percent drop in illnesses to 200,100 cases in 2023, the lowest number since 2019. The 2023 incidence rate of total recordable cases in private industry was 2.4 cases per 100 full-time equivalent workers, down from 2.7 in 2022 and the lowest rate for this data series going back to 2003.

Injury and illness case counts, private industry, 2014–23

Year	Injuries	Illnesses	Total recordable cases
2014	2,809,800	143,700	2,953,500
2015	2,765,300	140,500	2,905,900
2016	2,719,800	137,500	2,857,400
2017	2,685,100	126,400	2,811,500
2018	2,707,800	126,800	2,834,500
2019	2,686,800	127,200	2,814,000
2020	2,110,100	544,600	2,654,700
2021	2,242,700	365,200	2,607,900
2022	2,343,600	460,700	2,804,200
2023	2,368,900	200,100	2,569,000

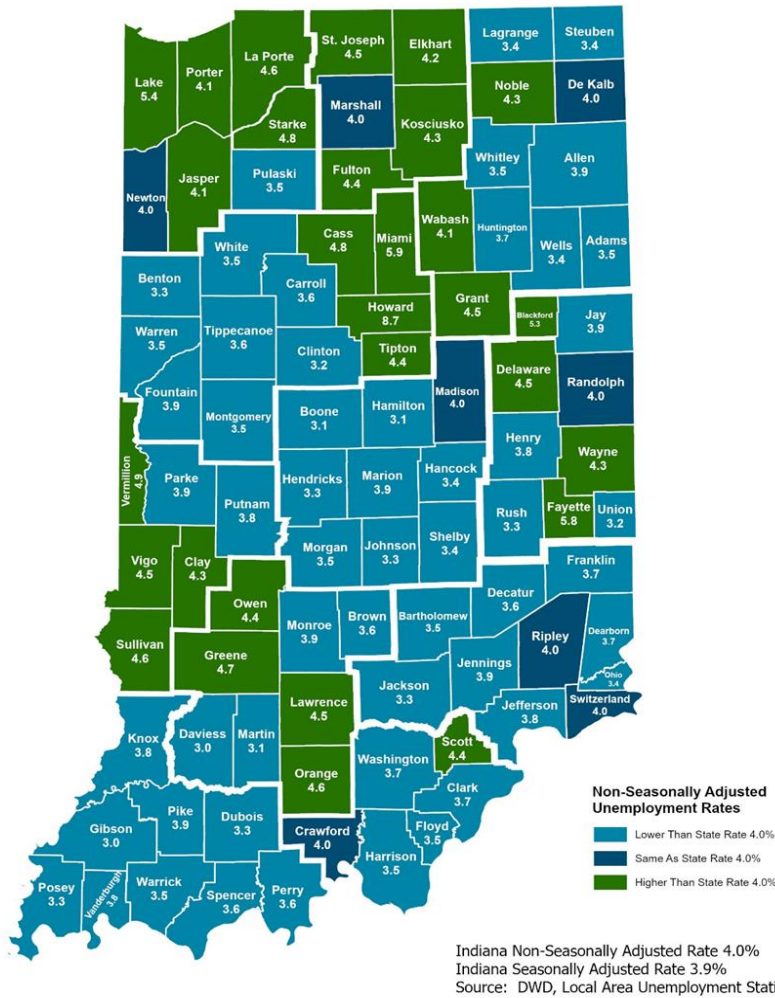
The decrease in illnesses was due to a 72.6-percent decrease in respiratory illness cases, down to 100,200 cases in 2023.

Respiratory illnesses and all illnesses case counts, private industry, 2019–23

Year	All illnesses	Respiratory illnesses
2019	127,200	10,800
2020	544,600	428,700
2021	365,200	269,600
2022	460,700	365,000
2023	200,100	100,200

These data are from the [Injuries, Illnesses, and Fatalities](#) program. To learn more about injuries and illnesses in the workplace, see "[Employer-reported Workplace Injuries and Illnesses —2023](#)." We also have [more charts on nonfatal work injuries and illnesses](#). For more information about how COVID-19 data are reflected in the Survey of Occupational Injuries and Illnesses, see [our COVID-19 factsheet](#).

County Unemployment Rates October 2024 - Non Seasonally Adjusted



Questions?

Please contact the DWD Research and Analysis Regional Labor Analyst listed below:

Jillian A. Gregory
 Regional Labor Analyst
 Research and Analysis

[Indiana Department of Workforce Development](https://www.in.gov/dwd/)

jgregory@dwd.in.gov